

The Graeme Park Gazette

APRIL - JUNE 2015

WWII WEEKEND

The grounds at Graeme Park will once again play host to our annual WWII Weekend. This family-friendly event is packed with great entertainment, period vehicles, living history displays and battle reenactments. The full schedule is available on page 3, but some of the highlights include an Abbott and Costello tribute show, swing dance lessons and concert, and ceremonies to honor our WWII veterans.

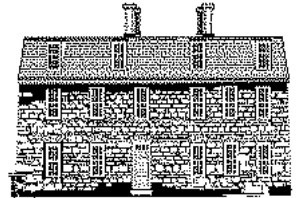


Earthborne for moving the tank to the site. Countless hours have gone into planning and organizing the event by our dedicated

corps of volunteers and many other businesses and local officials have supported us with their time and talents, ads in our program handout, or other services. We are very grateful for their support and efforts. Please see our blog at www.graemepark.blogspot.com for a full listing and links.



The Friends of Graeme Park would like to thank the sponsors and other supporters who help to make the weekend possible, including: PECO, Verizon, Black Horse Auto Body, Classic Pistol, and Babylon Business Campus for their sponsorship, the Days Inn, Horsham for providing rooms for our entertainers, and



Befriend the Past
The Friends of Graeme Park

INSIDE THIS ISSUE:

FROM THE PRESIDENT OF THE FRIENDS	2
WWII WEEKEND SCHEDULE	3
NEWSBRIEFS	3
LUNCH & LEARN LECTURE	4
THE BUTTONWOOD TREE	5
2015 WEDDING SEASON	6
WORLD WAR II WEEKEND	7

UPCOMING EVENTS

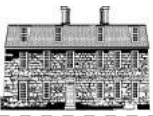
APRIL 8
Lunch & Learn Lecture

MAY 2-3
World War II Weekend

MAY 29
Annual Meeting

WWII Weekend

May 2-3 — Gates open at 9:30 a.m.
\$12/person (18+); \$5/kids (13-17)
See page 3 for Schedule & page 7 for additional photos.



GRAEME PARK



Graeme Park is the site of the Keith House, an 18th-century historic house, the only remaining home of a governor of colonial Pennsylvania. It is administered by the Pennsylvania Historical and Museum Commission in partnership with the Friends of Graeme Park, a 501c3 volunteer organization that raises funds, staffs, and promotes the site. The official registration and financial information of The Friends of Graeme Park may be obtained from the Pennsylvania Department of State by calling toll free, within Pennsylvania, 1-800-732-0999. Registration does not imply endorsement. Individuals who need special assistance or accommodation to visit Graeme Park should call (215) 343-0965 in advance to discuss their needs. Pennsylvania TDD relay service is available at (800)654-5984.

TOUR HOURS

Friday - Saturday

10 a.m. - 4 p.m.

Sunday Noon - 4 p.m.

Last tour starts at 3 p.m.

THE STAFF AT GRAEME PARK

Carla A. Loughlin

Mike MacCausland

THE PENNSYLVANIA HISTORICAL AND MUSEUM COMMISSION

Tom Corbett
Governor

James M. Vaughan
Executive Director

Andrew E. Masich
Chairman

From the President of the Friends

Welcome to Spring, 2015! It was a long time coming but it's safe to say the worst is behind us and along with flora and fauna, Graeme Park is awakening and gearing up for a busy year.

Mark your calendars for May 2 & 3 for our WWII Weekend. Come spend a day and get a glimpse into what life was like in 1942. Meet our WWII veterans and help us honor them for the heroes they are. Hear music of the day, take in an Abbott & Costello show, see the vehicles and encampments on the grounds and, of course, see the battle reenactments. It's a fun and entertaining day that will help you appreciate all that the "Greatest Generation" did for our country.

Carol & John Brunner, Jack Washington, Jim Miller, Bill Sparke, Julie Thiebeau, and the rest of the educational committee are getting ready to begin the school tour season again. These folks have so much dedication and deserve the highest praise for the many hours they give to the children and the wonderful program they present. The kids have a great time while learning about their local history and the colonial era. Many are so taken with the day they spend at Graeme Park that they bring their parents back for a visit. School Tours are a winner!

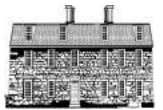
Weddings are coming along nicely and thanks to Open Aire Affairs and their diligent marketing efforts, Graeme Park is becoming a most popular place to have a wedding. When the tent is decorated, no matter what the theme, it's a beautiful reception venue. And it goes without saying that the grounds at the site are lovely and serene. Many happy couples have started their marriage with Elizabeth Graeme Fergusson's blessing and we look forward to hosting many more in the future.

If you are going to Horsham Day this year on June 6, please stop by our booth. We'll have a game for the kids and a bake sale for Graeme Park. Who wouldn't want a cupcake and help the site at the same time!

Don't forget the Annual Meeting of The Friends of Graeme Park on May 29 at 7:00 pm. We will be having elections for your Board of Directors and we want your vote and input.

Enjoy the warmer weather which, call me selfish but after this winter, I think we richly deserve all the "mild" we can get!

- Beth MacCausland



WWII Weekend - Schedule

SATURDAY - MAY 2

Periodically throughout day - Tours of the Historic Keith House

9:30 a.m. - Gates Open

10:00 a.m. - Flag Raising & Singing of the National Anthem with Mimi Drummond

10:15 a.m. - Weapons Demonstration

11:00 a.m. - Camp Tours

12:00 noon - Battle Reenactment

12:45 p.m. - [The Ultimate Abbott and Costello Tribute Show](#)

1:30 p.m. - Swing Dance Lessons

2:15 p.m. - [The Ultimate Abbott and Costello Tribute Show](#)

2:45 p.m. - State Representative Tom Murt / Dedication of Luminaries to honor Veterans

3:15 p.m. - Battle Reenactment

3:45 p.m. - USO Dance and Swing Concert with the [West Chester Swing Kings](#)

SUNDAY, MAY 3

Periodically throughout day - Tours of the Historic Keith House

9:30 a.m. - Gates Open

9:30 a.m. - Church Service Reenactment

10:00 a.m. - Flag Raising & Singing of the National Anthem

10:15 a.m. - Weapons Demonstration

11:00 a.m. - Camp Tours

11:00 a.m. - [The Ultimate Abbott and Costello Tribute Show](#)

11:30 a.m. - Patriotic Music with Mickey and Stanley Goldhaber

12:30 p.m. - Swing Dance Lessons

1:30 p.m. - State Representative Todd Stephens / Military Honor Guard

2:00 p.m. - Battle Reenactment

2:45 p.m. - [The Ultimate Abbott and Costello Tribute Show](#)

NEWSBRIEFS

Annual Meeting of the Friends of Graeme Park

On May 29 at 7:00 p.m. the Friends of Graeme Park will be holding their annual meeting and elections for members to the board of directors. Board members up for election include: Beth MacCausland, extending her term as President for one year; Toni Kistner, Gary Oswald and Donna Mitchell, renewing for a second term; Tony Checchia and Jim Cherry, new board members. All members in good standing are eligible to vote for new board members. The general public is invited to attend the meeting, which will take place in the Visitors' Center at Graeme Park - refreshments will be served. The Volunteer-of-the-Year award will also be presented.

Pirates at Graeme Park

Sail away, sail away searching for a chest brimming with writing treasures. Join the crew as we explore pirate lore... Blackbeard, Long John Silver, Captain Hook and more. Design a ship to carry you in search of writing adventures. Yo-ho-ho matey, let's meet at

Graeme Park in Horsham PA, July 13-17 and write some pirate tales. Grades 3-6; Program time 9AM-12PM. For more information visit www.pawlp.org and click on young writers camps or call us at 610-436-2297.

Visual Arts/Historical Fiction Storytellers

Through writing, drawing, water color, diorama, and collage, students grades 3-6 will create their own historical fictions. Using Graeme Park, the only surviving home of one of Pennsylvania's colonial-era governors, as the backdrop, writers will have the opportunity to enliven their writing through the arts in an authentic setting. Writers will explore the elements of story in a fun and imaginative way. (One week/July 6-10th). For more information visit www.pawlp.org and click on young writers camps or call us at 610-436-2297.



THE FRIENDS OF GRAEME PARK

MISSION STATEMENT

The mission of the Friends of Graeme Park is to provide on-going support of preservation, maintenance, development, interpretation, education and promotion of Graeme Park.

BOARD OF DIRECTORS

President	Beth MacCausland
Vice President	Jack Washington
Secretary	Jim Miller
Co-Treasurer	Diane Horan
Co-Treasurer	Bruce Rader
Member at Large	Marie Cherry
Member at Large	Margaret Choate
Member at Large	Deedie Gustavson
Member at Large	Toni Kistner
Member at Large	Donna Mitchell
Member at Large	Gary Oswald

STANDING COMMITTEE CHAIRPERSONS

Education	Carol Brunner
Finance	John Brunner
Fundraising	Bruce Rader
Governance	Marie Cherry
Grants	Jack Washington
Hospitality	Vacant
Insurance	Vacant
Legal	Vacant
Membership	Donna Mitchell
Museum Shop	Carol Brunner
	Carla Loughlin
Newsletter/Publicity	Carla Loughlin
Programs/Events	Beth MacCausland
Volunteers	Beth MacCausland
Website	Joan Stelmach

THE GRAEME PARK GAZETTE

is published quarterly by The Friends of Graeme Park in cooperation with the PA Historical and Museum Commission

Editor: Carla A. Loughlin



Befriend the Past
The Friends of Graeme Park

Lunch & Learn Lecture – April 8

Join us on Wednesday, April 8 for the first of our Lunch & Learn series featuring Kimberly Boice's talk on women's clothing of the 1770s. The discussion will show the many layers of women's clothing typical for the 1770s and include fabrics, style options, and accessories, with the opportunity for attendees to try on a reproduction garment or two at the end of the discussion. Boice is the Museum Educator at the Peter Wentz Farmstead and has devoted her career to museum studies and history.



A continental breakfast will be served before the talk and a hot and cold lunch buffet will follow. The cost is \$20/person and preregistration is requested. Please email us at ra-graemepark@state.pa.us or call Program Chair, Beth at 215-915-9453 for a registration form.





The Buttonwood Tree

By Carla A. Loughlin

The sycamore tree, easily distinguishable by its flakey white bark, is often seen around old farms and buildings. Sometimes this is because they were deliberately cultivated, and other times it is because settlers sought them out when they were choosing a building site. The trees, also called buttonwoods because of the spikey round button-like pod they bear, grow very tall and like wet areas. These properties made them easy to spot from a distance and assured the settler that he would have a good source of water for his new homestead. There was also an old tradition of planting a pair of sycamores to commemorate a couple's marriage, so you'll often see two of these trees growing side by side near the house.

The trees, which are frequently hollow on the inside, do not make very good building material and do not lend themselves to fine furniture. They are sometimes used for vessels such as wooden buckets and barrels, but more commonly they seem to stand sentry over old homes, witness events, and mark time and space.



Early land surveyors often used buttonwood trees to mark the corners of a property and old deeds frequently contain phrases like "Beginning at the buttonwood tree at the corner of Mathias Jackson's property..." They were often cut or notched to indicate that they were used as a marker.



The trees, which can live well over 200 years, are also often considered witness trees because they stood watch over a famous historical event. While it may not be part of the official definition, I think they can also witness the everyday lives of ordinary people and provide us with a living link to them – the trees were here when they were, and we're laying our eyes on the same living thing that they did. We have many old sycamores here on the grounds of Graeme Park – the largest I believe is the one on the far side of the stream opposite the Keith House – you'll see it to the right as you come up the driveway. The estimated age of the tree, using a formula based on the circumference, is 245 years old which means it was planted (or sprouted naturally) around 1770. The tree witnessed Elizabeth Graeme's life. Perhaps she sat under it to write, to await Henry's return, or to contemplate her life and figure out her next move after the Revolution changed things so drastically for her. We don't know of course, but like the preserved building she inhabited, it provides us with another link to her and her time – one that continues to live on without her.





Wedding Season Begins

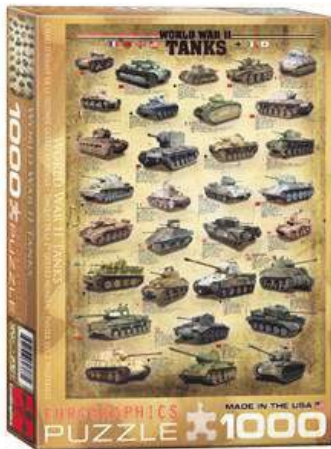
We're about to head full speed ahead into wedding season again and as of this printing have 16 weddings scheduled between April 25 and October 24. It is a hectic pace with some weekends booked Friday and Saturday nights and one hat trick with all three weekend nights booked. Not only does this bring much needed revenue to the site, but hundreds of guests are exposed to the history and



beauty of Graeme Park. We've seen wedding guests, families, and even catering staff back on a subsequent weekend to take the tour and learn more about us. Be sure to follow along on Facebook (www.facebook.com/GraemeParkHorsham) and our blog (www.GraemePark.blogspot.com) to see how

each bride transforms the site for her perfect day.

In the Museum Shop – Be sure to stop into the visitors' center during WWII to pick out a great gift or souvenir from the event. We have puzzles, paper dolls, glider planes, t-shirts, and more.



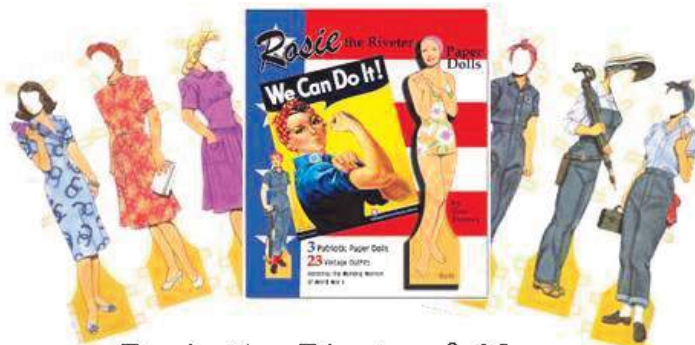
Puzzles -
\$5-\$20



Large WWII Glider Planes - \$8



Small WWII Glider
Planes - \$2



Rosie the Riveter & Navy
Scouts Paper Dolls - \$12





WEEKEND

Membership has its Privileges



All membership levels receive:
Free House Tours,
Free Admission to All
Non-Reserved Events,
Quarterly Newsletter

See our website at www.graemepark.org
for additional member benefits.

Household _____ \$40
Individual _____ \$25

Name _____
Street Address _____

City _____
State/Zip _____

☐ My check payable to the Friends
of Graeme Park is enclosed

☐ Please bill my Visa/MC/
Discover Card

Security Code _____
Exp. Date _____

Billing Zip
Code _____

Mail to: Graeme Park, 859 County
Line Rd, Horsham, PA 19044



Address Service Requested

859 County Line Rd.
Horsham, PA 19044
(215) 343-0965
www.graemepark.org

Lunch & Learn Lecture – April 8

WWII Weekend – May 2-3 | Annual Meeting – May 29

March

In Like a Lion, Out Like a Polar Bear

