

The Graeme Park Gazette

APRIL - JUNE 2016

WWII WEEKEND



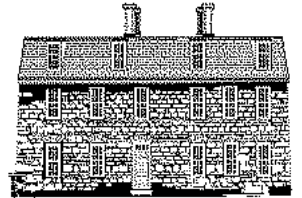
On April 30 and May 1 the grounds of Graeme Park will be transformed into a World War II arena as reenactors set up living history displays and camps representing the WWII European Theater and stage battles between American and German troops on the property. Our event tent will be transformed into a venue for U.S.O. style entertainment including the Ultimate Abbott and Costello Tribute Show, the West Chester Swing Kings performing favorites from the 1940s, swing dance lessons, and a concert of patriotic music.

Additionally there will be weapons demonstrations, period vehi-

cles (military and non-military) on display, a simulation air craft, American, German, British, and other camps, vendors, veterans' non-profits, World War II veterans, including a real Rosie the Riveter, and a luminary ceremony and gun salute to honor the vets.

The full schedule, as it stands now, is available on page 5 and please also see some of our sponsors and backers on page 3—without their support, the event would not be possible.

**WWII Weekend
April 30 – May 1**



Befriend the Past
The Friends of Graeme Park

INSIDE THIS ISSUE:

FROM THE PRESIDENT OF THE FRIENDS	2
WWII SUPPORTERS	3
NEWSBRIEFS	3
LUNCH & LEARN	4
WWII SCHEDULE	5
GRAEME PARK AFTER DARK	6

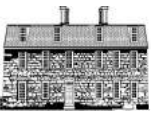
UPCOMING EVENTS

**APRIL 30 – MAY 1
WWII Weekend**

**APRIL 13
Lunch & Learn**

**APRIL 17
Wedding Open House**

**JUNE 11
Graeme Park After Dark**



GRAEME PARK



Graeme Park is the site of the Keith House, an 18th-century historic house, the only remaining home of a governor of colonial Pennsylvania. It is administered by the Pennsylvania Historical and Museum Commission in partnership with the Friends of Graeme Park, a 501c3 volunteer organization that raises funds, staffs, and promotes the site. The official registration and financial information of The Friends of Graeme Park may be obtained from the Pennsylvania Department of State by calling toll free, within Pennsylvania, 1-800-732-0999. Registration does not imply endorsement. Individuals who need special assistance or accommodation to visit Graeme Park should call (215) 343-0965 in advance to discuss their needs. Pennsylvania TDD relay service is available at (800)654-5984.

TOUR HOURS

Friday - Saturday
10 a.m. - 4 p.m.

Sunday Noon - 4 p.m.
Last tour starts at 3 p.m.

THE STAFF AT GRAEME PARK

Carla A. Loughlin
Mike MacCausland

THE PENNSYLVANIA HISTORICAL AND MUSEUM COMMISSION

Tom Corbett
Governor

James M. Vaughan
Executive Director

Andrew E. Masich
Chairman

From the President of the Friends

Happy Spring! It's time to pack the wagons and carriages. Let us saddle the horses and head to Graeme Park.

The Graeme family probably said and did just that as they readied themselves to leave the city and go to their country residence in Horsesham. Spring was the season to begin the move out of the city before the heat set in. The Graemes and many of their counterparts would pack and leave Philadelphia for months at a time. The social season would be winding down as those in the upper class of society began their trek to fine country homes where they would lead a more quiet life until the chill in the air took them back to the hustle and bustle of the city.

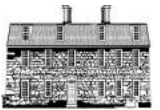
Once the Graeme Family opened the summer home, they would invite friends to visit who would enjoy their hospitality. In that tradition, we invite you to Graeme Park in these coming months to also enjoy what generations before us did. Relax in the quiet tranquility of the site, visit the house or join us for one of our programs or events on the calendar in 2016.

As you will see in this newsletter, we have Lunch and Learn coming up on April 13, a wedding venue open house with The Red Cedar Grille on April 17, our WWII Weekend on April 30 & May 1 and our newest program, "Graeme Park After Dark" on June 11.

With the advent of spring, our school tour committee comes out of hibernation and begins a whole new season of countless tours for children. They work tirelessly to keep Graeme Park's history alive by introducing our local history to the next generation.

So whether you are saddling up the horses, packing the wagons and carriages or boarding a school bus, hopping into the minivan or sports car, head on over to Graeme Park this coming season and enjoy one of our fun-filled events or just take some time out of your busy life to enjoy the tranquility that has been a part of this stately property for almost 300 years. You are always welcome!

- Beth MacCausland



WWII Weekend Supporters

Pearl Harbor Society
PECO

Iwo Jima Sponsors
Classic Pistol
Heffernan & Partners

Advertisers
County Line Fence

Conlin's Copy Center
Joseph A. D'Alonzo, ReMax Realty
Richard Cohen & Co.
Self Heating & Cooling, Inc.

Ambiance Design
Antinucci Home Improvements
Army Jeep Parts
Bound Beverages
CEMI Automotive

Hanson Mechanical Restorations
Hatboro Jewelers
Joseph P. Doyle Machine Tool Sales, Inc.
Knuckleball Sports
Lakeview Dental
Michael G. Crilly, Patent Attorney
Streamline Payroll

** Complete as of publication deadline*



NEWSBRIEFS

Youth Writing Camp

Visual Arts Storytellers: Mystery at the Old Mansion:

There is a mystery waiting to be written at Graeme Park. Do you like puzzles...uncovering clues and solving mysteries? Are you a questioner, investigator, problem solver? Become a sleuth at Graeme Park from July 11-15, 2016 and create a mystery to solve and find out who is Fidele??? Register online at www.pawlp.org or call 610-436-3089. For students completing grades 3-6. Discount for early registration.

Sponsored by the Pennsylvania Writing and Literature Project at West Chester University. These camps are for students who love to write and read. The programs teach writing as a process in a relaxed, camp environment. All classes are small, averaging 13-15 students. All instructors are experienced teachers and Fellows of the National Writing Project.

Charter Day

On Sunday, March 13 Graeme Park participated in Charter Day, held across the state at various state owned and/or operated historic sites. We had just over 70 visitors tour the house, watch the orientation video and learn a little bit about Graeme Park and our history during this annual free open house.

Wedding Open House with the Red Cedar Grille

On Sunday, April 17 we will be holding an open house with The Red Cedar Grille of Colmar for engaged couples to see the Graeme Park property, sample The Red Cedar's food and meet other select vendors as they begin planning their wedding. The open house will be held from 1:00 to 3:00 p.m. and our rental coordinator will be on hand to answer questions about having your wedding at Graeme Park! Please contact Beth at 215-915-9453 or by email at BethGPFriendsVP@aol.com for more information or to RSVP.



THE FRIENDS OF GRAEME PARK

MISSION STATEMENT

The mission of the Friends of Graeme Park is to provide on-going support of preservation, maintenance, development, interpretation, education and promotion of Graeme Park.

BOARD OF DIRECTORS

President	Beth MacCausland
Vice President	Jack Washington
Secretary	Melissa Kurek
Co-Treasurer	Marie Cherry
Co-Treasurer	Diane Horan
Member at Large	Tony Checchia
Member at Large	Jim Cherry
Member at Large	Deedie Gustavson
Member at Large	Toni Kistner
Member at Large	Donna Mitchell
Member at Large	Gary Oswald

STANDING COMMITTEE CHAIRPERSONS

Education	Carol Brunner
	John Brunner
Finance	Bruce Rader
Fundraising	Marie Cherry
Governance	Jack Washington
Grants	Beth MacCausland
Hospitality	Vacant
Insurance	Vacant
Legal	Vacant
Membership	Donna Mitchell
Museum Shop	Carol Brunner
	Carla Loughlin
Newsletter/Publicity	Carla Loughlin
Programs/Events	Beth MacCausland
Volunteers	Beth MacCausland
Website	Tony Checchia
	Melissa Kurek

THE GRAEME PARK GAZETTE

is published quarterly by The Friends of Graeme Park in cooperation with the PA Historical and Museum Commission

Editor: Carla A. Loughlin



Befriend the Past

The Friends of Graeme Park

Lunch & Learn

April 13

Lecture
at Graeme Park

The Role of Quaker Women in Colonial America



From the beginning the Quakers treated women more equally and gave them more power and the ability to hold leadership positions within their faith than any of the other early Christian religions. They were allowed to speak in meeting, publish, and encouraged to get an education. While Quaker women enjoyed greater equality within the church and community, their influence did not extend to financial matters, and men kept the upper hand by taking care of property, finances, and business.

Learn more about the role of early Quaker women from speaker Sarah DiSantis, director of the Morgan Log House, at our spring Lunch & Learn Lecture at Graeme Park.

A continental breakfast will be served before the talk and a hot and cold lunch buffet will follow. Tours of the historic Keith House will also be available. The cost is \$20/person and preregistration is requested.

Lunch will include:

- Hot entrée
- Deli tray with rolls and sandwich "fixins"
- Vegetarian option
- Salad, dessert, beverages

Schedule

- 10:15 a.m. - Check-in & breakfast begins
- 11:00 a.m. - Lecture
- 12:00 noon - Lunch
- After Lunch - Tour of the Historic Keith House

Graeme Park - 859 County Line Road - Horsham, PA 19044

www.graemepark.org | 215-343-0965

\$20/person

*Includes lecture, continental
breakfast, lunch & tour*

Please add my email to your list to receive occasional notices of Graeme Park news and events including the next Lunch & Learn Lecture

My check for \$20/pp is enclosed. Please make checks out to "The Friends of Graeme Park"

Please bill my credit card

Name(s): _____

Address: _____

City: _____ Zip: _____

Phone: _____ Cell: _____

eMail: _____

Card # _____

Exp. Date: _____ Code: _____

Billing Zip Code: _____

WWII WEEKEND SCHEDULE

SATURDAY, APRIL 30TH

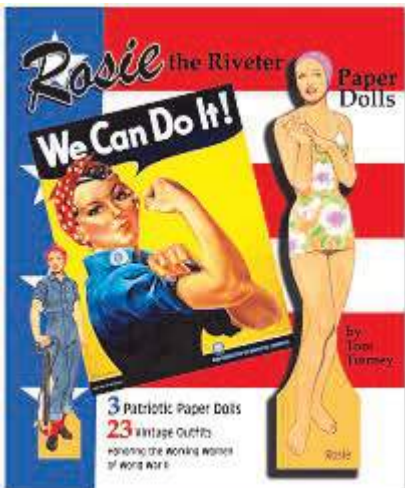
- Periodically throughout the day - Tours of the historic Keith House
- 9:30 AM - Gates Open
- 10:00 AM - Flag Raising and Singing of the National Anthem with Mimi Drummond
- 10:15 AM - Weapons and Equipment Demonstration
- 11:00 AM - The Ultimate Abbott and Costello Tribute Show
- 12:00 NOON - Battle Reenactment
- 1:00 PM - The Ultimate Abbott and Costello Tribute Show
- 2:00 PM - Rosie the Riveter (Mae Krier)
- 2:30 PM - The Ultimate Abbott and Costello Tribute Show
- 3:00 PM - Battle Reenactment
- 3:45 PM - Swing Dance Lessons
- 5:00 PM - USO Dance with the West Chester Swing Kings

SUNDAY, MAY 1ST

- Periodically throughout the day - Tours of the historic Keith House
- 8:30 AM - WWII Field Church Service
- 9:30 AM - Gates Open
- 9:30 AM - WWII Field Church Service
- 10:00 AM - Flag Raising and Singing of the National Anthem with Mimi Drummond
- 10:15 AM - Weapons and Equipment Demonstration
- 11:00 AM - Rosie the Riveter (Mae Krier)
- 11:45 AM - The Ultimate Abbott and Costello Tribute Show
- 12:30 PM - Swing Dance Lessons
- 1:30 PM - Honor Guard with State Representatives Todd Stephens, Kate Harper, and Tom Murt, Twp. Mgr. Bill Walker, and Horsham Twp. Counsel Members; Honoring of Veterans and Lighting of Luminary Bags with Rep. Tom Murt
- 2:30 PM - Battle Reenactment
- 3:15 PM - The Ultimate Abbott and Costello Tribute Show
- 4:00 PM - Close of Event

* Tentative Schedule - Subject to Change

Stop into the Gift Shop during **WWII Weekend** for great '40s themed merchandise — paper dolls, puzzles & more!





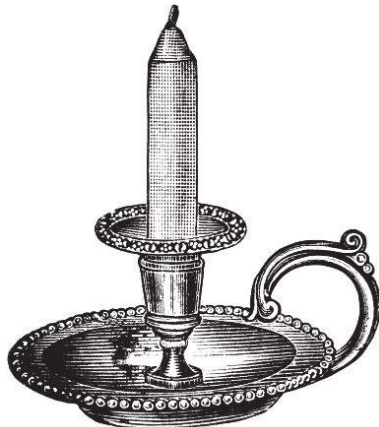
Graeme Park after Dark

Graeme Park was built as a summer home and retreat from the heat and disease of the city. For a wealthy family like the Graemes, used to an active social life in Philadelphia during the winter months, the isolation of summers in the country was held at bay by frequent visitors and overnight guests. While entertainments weren't as formal as the theater performances and dancing academies held in the city, they did enjoy lively conversation, the natural opportunities the countryside provided, and shared their literary and musical talents with one another. It was not unusual for ladies of this social class, with servants to tend to their children and housework, to spend weeks at a time visiting with one another.

In the 19th century Graeme Park was inhabited by the Penrose family, who were Quaker farmers. Evenings for a farming family were quite different, with time being spent working – carding wool, mending clothes, harvesting in the fall, and cleaning and repairing tools before turning in in anticipation of an early morning of animal care and other farm responsibilities.

Join us on Saturday, June 11 at 7:00 and 7:20 p.m. for a peek into the lives of the members of the Graeme and Penrose families as they settle in for a summer night at Graeme Park.

Tours are free of charge but we do request a donation to help support the Friends of Graeme Park and the work that we do to preserve and interpret the site.



Visual Arts Storytellers Mystery at the Old Mansion



There's a mystery waiting to be written at Graeme Park.

Do you like uncovering clues and solving mysteries? Are you a questioner, investigator, problem solver? Become a sleuth at Graeme Park from July 11-15, 2016 and create a mystery to solve and find out: **Who is Fidele???**

Register online at www.pawlp.org or call 610-436-3089

Sponsored by the Pennsylvania Writing and Literature Project at West Chester University

History's Lies

Death by Petticoat: American History Myths Debunked by Mary Miley Theobald (Colonial Williamsburg Foundation, 2012) takes on 63 "lies" commonly told by volunteers and professional docents at historic sites and museums. Many of these come up at Graeme Park.

The master bedroom alone provides us with many opportunities to spread misinformation, including the seemingly short bed which generally prompts the visitors themselves to comment on how people were shorter then, which we then correct with the myth that they would sleep partly propped up to allow for better breathing. In reality, according to Theobald, the visitors are correct—now. Studies done in the 1960s showed the soldiers during the Korean War in the 1950s were only slightly taller than soldiers of the Revolutionary War, but more recent studies comparing Civil War soldiers to modern men show a differ-

ence of about 3" - so this myth has been around long enough that modern nutrition and medical practices have made it a reality. As for the beds being shorter, most when measured are at least 75", the length of today's double bed and some are longer. The high posts, hangings, and fluffy down ticks make them appear shorter than they really are.

Visitors, especially those who live in old houses of their own, are always impressed that we have closets—after all they've heard that closets were taxed as rooms, and we like to think of ours as a sign of the Graeme family's wealth that they could afford these extra taxes. Theobald's study of inventories and floor plans has shown that many houses had closets positioned on either side of the chimney, just as ours are. They were often used for general storage more than clothing, which was folded up in drawers, but her research

did not turn up any examples of a closet tax in the 13 original colonies.

The long stemmed clay pipe that rests on the secretary often spurs a conversation on archaeology and the frequency with which pipe stems are found—supposedly men would break the stem off for sanitary reasons before passing it to the next man and discard the broken piece. In reality Colonial medicine wasn't advanced enough to understand the transmission of germs but the clay pipe conducted heat very well, so the long stem was needed in order to keep from burning ones lips when the heat transferred down the stem from the bowl. The clay is easily broken, hence the propensity of stems, but it is not done deliberately.

Death by Petticoat is available in paperback for around \$13 and Kindle for about \$6.

Membership has its Privileges



All membership levels receive:

Free House Tours | Free Admission to All Non-Reserved Events | Quarterly Newsletter
10% Shop Discount

See our website at www.graemepark.org for additional member benefits.

Household _____ \$40 Individual _____ \$25

Name _____

Street Address _____

City _____ State _____

Zip _____

My check payable to the Friends of Graeme Park is enclosed

Please bill my Visa/MC/Discover Card /AMEX

Security Code ____ ____ ____

Exp. Date _____

Billing Zip Code _____

Mail to:

Graeme Park, 859 County Line Rd, Horsham, PA 19044



Befriend the Past
The Friends of Graeme Park

859 County Line Rd.
Horsham, PA 19044
(215) 343-0965
www.graemepark.org

Address Service Requested

Lunch & Learn – April 13
WWII WEEKEND—APR. 30-MAY 1
Graeme Park after Dark – June 11

Spring at Graeme Park



Spring at Graeme Park is always a busy and exciting time. After a long winter we begin again with school tours, the gardens start to grow, and the geese and barn swallows return. This spring we're eagerly awaiting the installation of the new wedding tent and have a record 19 weddings lined up for the 2016 season. WWII Weekend is coming up on April 30 – May 1 and we have a new living history program on June 11 focusing on the evening activities of the Graeme and Penrose families. Please make time to come out to a program, for a house tour, or just to enjoy the grounds and the nature trail.